

2009 STAMPS



Created for free use in the public domain

American Philatelic Society ©2010 • www.stamps.org

Financial support for the development of these album pages provided by Mystic Stamp Company

America's Leading Stamp Dealer and proud of its support of the American Philatelic Society

www.MysticStamp.com, 800-433-7811

2009 United States Postal Service Issues

Alaska Statehood

January 3

In 1959, Alaska became the 49th state to join the Union. The largest of the 50 states, its name is derived from the Aleut word meaning "great land." This stamp features a dogsledder near Rainy Pass in the Alaska Range.

Lunar New Year: Year of the Ox

January 8

The second in the Celebrating Lunar New Year series is the Year of the Ox. This stamp shows a lion head such as those often worn at parades and other festivities. Ten more stamps will be issued in this series.

Oregon Statehood

January 14

Oregon became the 33rd state to become a part of the U.S. in 1859. The Pacific coastline, with its rocks, cliffs, and pounding surf are depicted on this stamp.

Edgar Allan Poe

January 16

Edgar Allan Poe (1809–1849) is remembered as a fiction writer, poet, editor, and literary critic. He was one of the first to write science fiction and is considered the inventor of detective-fiction.

California Redwood Forest priority mail

January 16

The 2009 Priority Mail stamp pays tribute to America's ancient redwood forests, depicting two people walking through a forest of redwood trees. The redwood tress almost met their demise in the 1800s when settlers saw them as an inexhaustible lumber supply. In 1968 Congress created the Redwood National Park to preserve the area's majestic forest and ecosystem.

Old Faithful, Yellowstone express mail

January 16

On March 1, 1872, the U.S. Congress established Yellowstone National Park as our first national park. The Park is best known for its wildlife and its many geothermal features. The 2009 Express Mail stamp shows the eruption of one of Yellowstone's most popular geysers — Old Faithful. Several bison graze nearby in the warm glow of an autumn sunset.

© 2009 — *The Scott numbers are the copyrighted property of Amos Press Inc., dba Scott Publishing Co. and are used here under a licensing agreement with Scott.*

The marks "Scott" and "Scott's" are Registered in the U.S. Patent and Trademark Office, and are trademarks of Amos Press, Inc. dba Scott Publishing Co. No use may be made of these marks or of material in this publication, which is reprinted from a copyrighted publication of Amos Press, Inc., without the express written permission of Amos Press, Inc., dba Scott Publishing Co., Sidney, Ohio 45365.



2009 United States Postal Service Issues



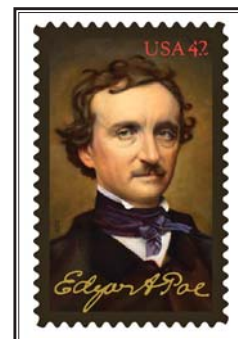
Alaska Statehood
January 3



Lunar New Year: Year of the Ox
January 8



Oregon Statehood
January 14



Edgar Allan Poe
January 16



California Redwood Forest
priority mail
January 16



Old Faithful, Yellowstone
express mail
January 16



2009 United States Postal Service Issues

Abraham Lincoln

February 9

One of America's greatest presidents, Abraham Lincoln (1809–1865), is depicted as a youth splitting a log for a snake fence on one stamp in this set, celebrating the 200th anniversary of Lincoln's birth. Using his intelligence, integrity, and commitment to the United States, "Honest Abe" rose from a modest "rail-splitter" to become a prominent lawyer, politician, and this nation's 16th president.

Miami University Postal Card

February 17

The U.S. Postal Service Historic Preservation series continues with the release of the Miami University (Oxford, Ohio) postal card. An illustration of MacCracken Hall is used to commemorate the University's bicentennial.



2009 United States Postal Service Issues

Abraham Lincoln
February 9



Rail Splitter



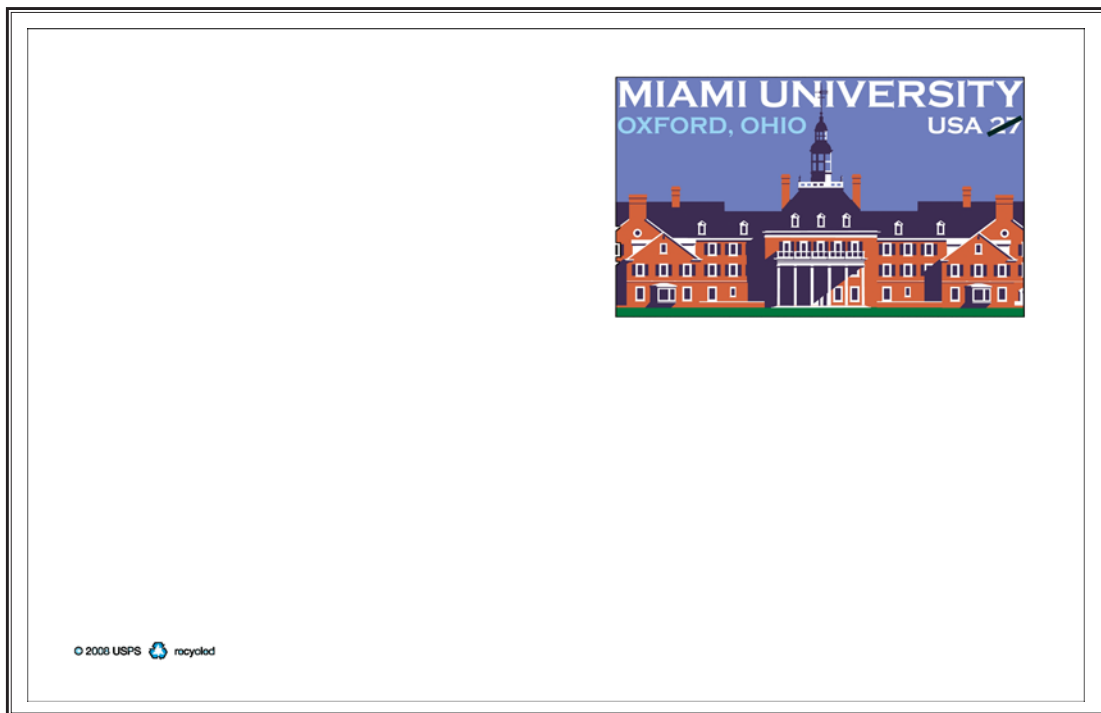
Lawyer



Politician



President



Miami University Postal Card
February 17



2009 United States Postal Service Issues

Civil Rights Pioneers

February 21

Since 1909, the National Association for the Advancement of Colored People (NAACP) has campaigned for racial equality. With the issue of the Civil Rights stamps, the Postal Service honors 12 visionary men and women who energized a movement — the struggle for African-American civil rights — that spanned generations.

Pictured on the stamps are:

Top row of stamps:

Mary Church Terrell (1863–1954), writer, activist, and lecturer was a powerful advocate for racial justice and women's rights.

Mary White Ovington (1865–1951) was a journalist and social worker who believed in racial equality and was a founder of the NAACP.

J.R. Clifford (1848–1933) was the first black licensed attorney in West Virginia. In 1898, Clifford won a landmark educational civil rights case before the West Virginia Supreme Court of Appeals, which bolstered equal educational rights for African-American students.

Joel Elias Spingarn (1875–1939) endowed the prestigious Spingarn Medal, awarded annually to highlight black achievement. This bolstered more positive media coverage for African-Americans.

Oswald Garrison Villard (1872–1949) issued "The Call," an invitation to a national conference on the centennial of Abraham Lincoln's birth, February 12, 2009. This became one of the major events that led to the founding of the NAACP.

Daisy Gatson Bates (1914–1999) was a civil rights leader, journalist, publisher, and author. She mentored nine black students who enrolled at an all-white school in Little Rock, Arkansas, which led to the integration crisis of 1957.

Bottom row of stamps:

Charles Hamilton Houston (1895–1950) believed in using laws to better the lives of underprivileged citizens. As a lawyer and educator, he was one of the main architects of the civil rights movement.

Walter White (1893–1955) was one of the most important civil rights leaders at the beginning of the twentieth century. He headed a national effort to achieve political, economic, and social rights for African Americans. His blond hair and blue eyes enabled him to make daring undercover investigations for the NAACP.

Medgar Evers (1925–1963) served as a field secretary for the NAACP. He was one of the first major civil rights leaders to be assassinated for his convictions. His death prompted President Kennedy to ask Congress for a comprehensive civil rights bill, which was signed into law in 1964.

Fannie Lou Hamer (1917–1977) was a Mississippi sharecropper who fought for black voting rights and spoke for many when she said, "I'm sick and tired of being sick and tired." When she was 44, members of the Student Nonviolent Coordinating Committee came to her hometown in Montgomery County, MS, and held a voter registration meeting. Hamer was the first to raise her hand, for which she was jailed and beaten by the police.

Ella Baker (1903–1986) was inspired by the historic bus boycott in Montgomery, AL, to co-found the organization, In Friendship. The goal of In Friendship was to raise money for the fight against laws of segregation in the public schools, public places, public transportation, restrooms, restaurants, and even the U.S. military.

Ruby Hurley (1909–1980) directed the NAACP's youth councils from 1943 to 1952. She investigated the murders of two African Americans who were killed because of registering to vote. She also investigated the murder of a 14-year-old, traveling in disguise to find witnesses to the incident.



2009 United States Postal Service Issues

CIVIL RIGHTS PIONEERS

THE COURAGE AND COMMITMENT OF THESE MEN AND WOMEN,
LEADERS OF THE STRUGGLE FOR AFRICAN-AMERICAN CIVIL RIGHTS,
ENERGIZED A MOVEMENT THAT SPANNED GENERATIONS.



Civil Rights Pioneers
February 21



2009 United States Postal Service Issues

10¢ Patriotic Banner February 24

The Presorted Standard rate is used for bulk mailings (often form letters or sales flyers.) The mailing must contain at least 200 pieces, and must be sorted according to USPS standards. Customers using this 10¢ stamp will need to pay the difference at the time of mailing in order to pay the current Presorted Standard rate.

Forever February 24

The Forever stamp has been re-issued with a 2009 date printed alongside the Liberty Bell. Although they went on sale in May, they were not sold in the local post offices until the inventory from previous years was used.

Literary Arts Series Richard Wright April 9

The 2009 *Literary Arts* series shows author Richard Wright. He is best known for his autobiography, *Black Boy*, which portrayed racism in the American society, and his controversial 1940 novel, *Native Son*.

Polar Bear, post card rate Date: April 16

This stamp features an illustration of an adult polar bear. Polar bears have adapted to life in the Arctic regions. Their fur is very thick and covers even their feet! They also have a thick layer of blubber beneath their fur that helps them float when they are hunting for food in the icy northern water.

Purple Heart April 28

A Purple Heart is awarded by the President to any member of a U.S. Armed Force, or any civilian serving with one of the Armed Forces, who has been wounded or killed. The Purple Heart is authorized for the first wound suffered; subsequent injuries entitle the injured person to an Oak Leaf Cluster award.

The Purple Heart stamp has been issued in the appropriate first-class postal rates since 2003.

Wedding Ring (44¢) Wedding Cake (61¢) May 1

The Wedding Cake stamp adds a touch of romance to a wedding invitation. This is used for mailings up to the two-ounce mailing rate which accommodates the heavier weight of a wedding invitation.

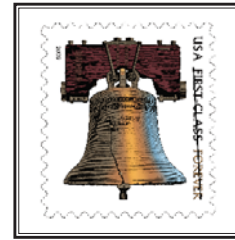
The Wedding Rings stamp was designed by the USPS for use on the RSVP envelope often enclosed with a wedding invitation. The stamp design shows two gold wedding rings united by a small white ribbon.



2009 United States Postal Service Issues



10¢ Patriotic Banner
February 24



Forever
February 24



Literary Arts Series
Richard Wright
April 9



Polar Bear
April 16



Purple Heart
April 28



Wedding Ring (44¢)
May 1



Wedding Cake
May 1



2009 United States Postal Service Issues

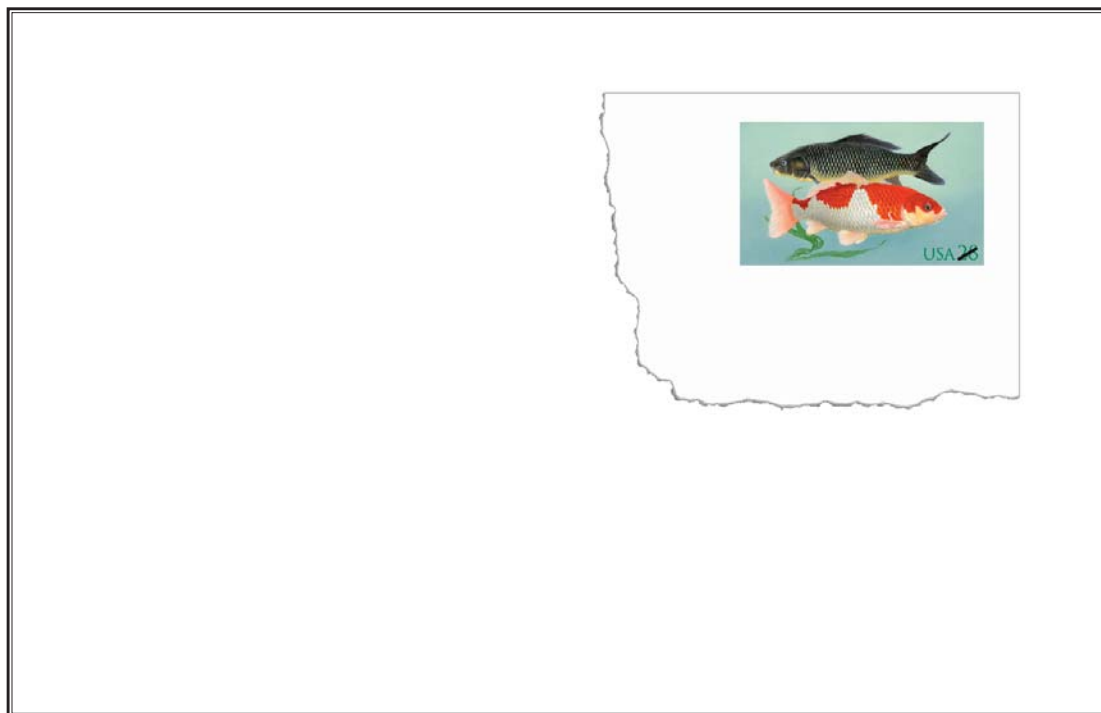
28¢ Koi Fish postal card and 56¢ postal reply card

April 17

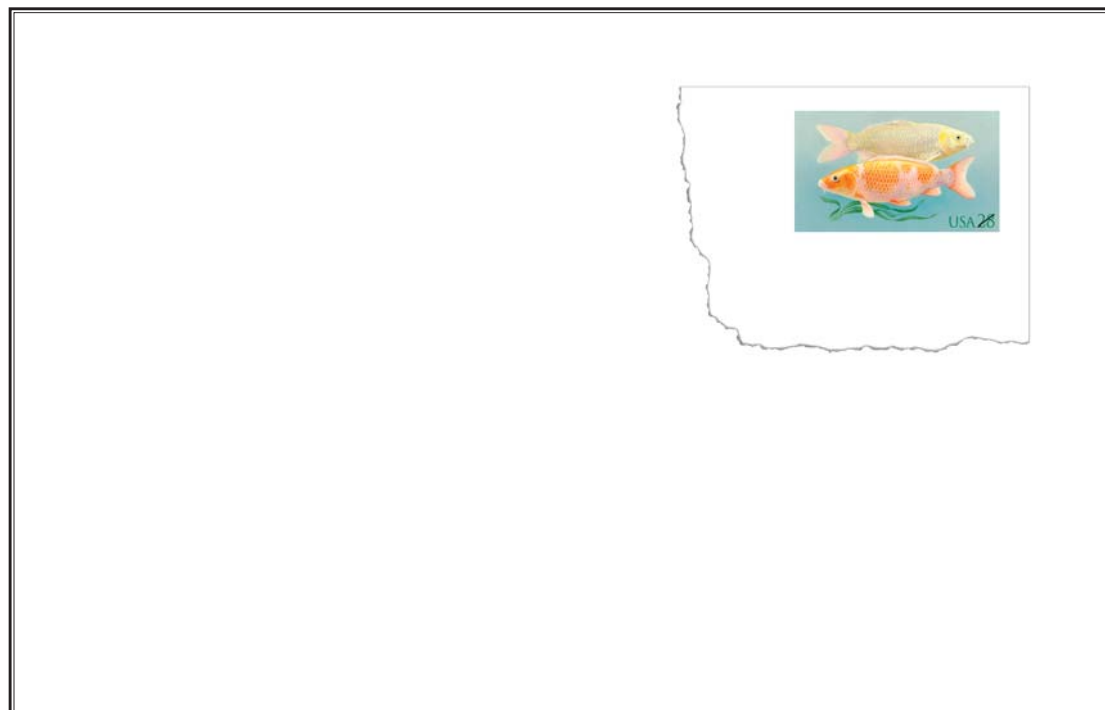
These stamped cards feature colorful carp known as koi. Many Americans collect koi, prizing these large freshwater fish for their bold, bright colors in striking combinations and patterns.



2009 United States Postal Service Issues



Koi Fish postal card
April 17



Koi Fish postal reply card
April 17



2009 United States Postal Service Issues

The Simpsons

May 7

The Simpsons, winner of 24 Emmy Awards, is celebrating the “Best. 20 Years. Ever.” which will culminate on the 20th anniversary of the series debut — January 14, 2010. Shown on the stamps are Homer J. Simpson, the patriarch of the Simpson clan; Homer’s wife Marge, the baker, cleaner, consoler, and glue that holds the family together; their son, Bart, the clever prankster who seems to always be in trouble; middle child Lisa, the most intelligent member of the family; and one-year-old Maggie who spends her time watch television while sucking on her pacifier.

Love: King & Queen of Hearts

May 8

The Postal Service pays clever tribute to what is said by many to be world’s favorite “game” with the issuance of the King and Queen of Hearts, the latest stamps in the Love series. The two stamp designs, one of the King and one of the Queen, are based on images from 18th-century French playing cards.

Distinguished Americans series

Mary Lasker

May 15

This stamp in the *Distinguished Americans* series honors Mary Woodard Lasker (1900-1994), philanthropist, political strategist, and ardent advocate of medical research for major diseases. Lasker persuaded the nation’s leaders to adopt dramatic increases in public funding for biomedical research, and her efforts helped make cancer research a national priority.

Bob Hope

May 29

Bob Hope (1903–2003) had a top rated television show, worked on the live stage and in radio shows, and was in motion pictures — all making people laugh. His nickname “G.I. Bob” came from his dedication to entertaining military personnel serving overseas from World War II to Operation Desert Storm.

Celebrate

June 10

The Celebrate! stamp helps Americans celebrate everything from birthdays to engagements to anniversaries, and more. When good times call for good wishes, this stamp adds a touch of cheer to special greeting cards and gift packages.

This stamp was previously issued in 41-cent and 42-cent denominations.



2009 United States Postal Service Issues



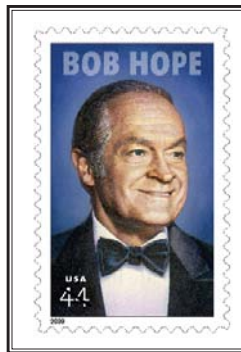
The Simpsons
May 7



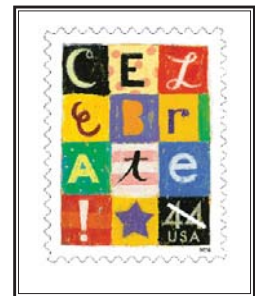
Love: King & Queen of Hearts
May 8



Distinguished Americans series
Mary Lasker
May 15



Bob Hope
May 29



Celebrate
June 10



2009 United States Postal Service Issues

Seabiscuit stamped envelope

May 11

An unassuming champion, Seabiscuit raised the hopes and spirits of a beleaguered nation during the Great Depression with a series of unlikely victories. Seabiscuit ran perhaps his greatest race against just a single horse: the 1937 Triple Crown winner War Admiral. Held on November 1, 1938, at Pimlico, the race drew around 40,000 spectators and was broadcast on the radio to 40 million listeners across the country, including President Franklin D. Roosevelt. War Admiral, the favorite to win, ran his fastest time at the track distance of 1 3/16 miles. However, Seabiscuit won the race by four lengths and set a blazing track record in the process.





Seabiscuit stamped envelope
May 11



2009 United States Postal Service Issues

Black Heritage series

Anna Julia Cooper

June 11

Anna Julia Cooper (c.1858-1964), educator, scholar, feminist and activist, gave voice to the African-American community during the 19th and 20th centuries — from the end of slavery to the beginning of the Civil Rights Movement. Ms. Cooper is the 32nd inductee into the Postal Service Black Heritage series.

Dolphin

June 12

This 64-cent stamp, used for non-machinable first-class mail, features the bottlenose dolphin, a marine mammal noted for its high intelligence and playful behavior. Found mainly in temperate and tropical waters, bottlenose dolphins are social animals that live in groups ranging in size from two to several hundred. They eat a variety of fish, as well as squid and crustaceans.

Zion National Park

June 28

This Mexico airmail rate stamp features Zion National Park. Located in Utah, the park was established in 1909. It is characterized by its high plateaus and mesas, and deep sandstone formations carved into towering cliffs. The park is featured on this Scenic American Landscapes series stamp.

Legends of Hollywood

Gary Cooper

September 10

Frank James “Gary” Cooper (1901–1961) was an actor known for his quiet acting style. Cooper received five Academy Award nominations for Best Actor, winning twice — once for his performance as the title character in Sergeant York and the second time as Marshal Will Kane in High Noon. In 1966 he was inducted into the Western Performers Hall of Fame in Oklahoma City, Oklahoma.

Hawai'i Statehood

August 21

Two people paddling an outrigger canoe are shown behind a surfer riding a wave on a longboard are shown on this stamp honoring the 50th anniversary of Hawai'i's statehood. Hawai'i became the 50th state on August 21, 1959.

Grand Teton National Park

June 28

The International airmail rate stamp shows the Grand Teton National Park in Wyoming. The park was established in 1929 to protect part of the Teton Range and nearby lakes. Moose, bald eagles, and trumpeter swans are among the wildlife seen by the more than 2.5 million visitors each year.

Gulf Coast Lighthouses

July 23

The popular series of Lighthouse stamps continues with the issuance of the Gulf Coast Lighthouses. Five stamps depicting the Fort Jefferson Lighthouse located near Key West, FL, the Matagorda Island Lighthouse located near Port O'Connor, TX, the Sabine Pass Lighthouse located in Sabine Pass, LA, the Biloxi Lighthouse located in Biloxi, MS, and the Sand Island Lighthouse located near Mobile, AL are featured on this set of stamps.



2009 United States Postal Service Issues



Black Heritage series
Anna Julia Cooper
June 11



Dolphin
June 12



Zion National Park
June 28



Legends of Hollywood
Gary Cooper
September 10



Hawaii Statehood
August 21



Grand Teton National Park
June 28



Gulf Coast Lighthouses
July 23



2009 United States Postal Service Issues

Early TV Memories

August 11

Television shows first entered our parents' (or grandparents'...or great-grandparents') homes shortly following World War II. This was a new technology that provided a different type of entertainment for families.

Texaco Star Theater was a comedy-variety show, which brought vaudeville to television. Sponsored by Texaco, in addition to using its name in the title of the show, the company had employees featured throughout the show, often appearing as smiling "guardian angels." Milton Berle initially hosted the show earning the nickname "Mr. Television."

I Love Lucy centered on the Lucy and Ricky Ricardo family. Lucy is a naïve, ambitious stay-at-home mother with a knack for getting herself into trouble with her overactive imagination. Lucy tests her husband's patience, as he often becomes exasperated with her antics to the point where he even needs to spank her on occasion.

The *Red Skelton* show entertained the television viewer with singing, dancing, but most comedy. Through pantomime and his clowning skills, his numerous characters including Freddie the Freeloader, Clem Kaddiddlehopper, George Appleby, and the seagulls Gertrude and Heathcliffe delighted audiences for decades.

Howdy Doody was a western themed children's television program, featuring a freckle-faced boy marionette — Howdy Doody — operated by puppeteer Buffalo Bob. The show was filmed with on-stage bleachers seating about 40 children. Each show began with Buffalo Bob asking, "Say kids, what time is it?" and the kids yelling in unison, "It's Howdy Doody Time!"

Dragnet was a crime drama about the cases of a dedicated Los Angeles police detective, Sergeant Joe Friday, and his partners. The show's opening narration stated "The story you are about to see is true. Only the names have been changed to protect the innocent." The series showed the dangers and heroism, as well as the boredom and drudgery, of real-life police work.

Lassie is a fictional collie dog who is courageous and very intelligent, as well as loyal and protective. At the beginning of the long-running series Lassie reside on a farm with Timmy, his youthful owner. Later seasons have Lassie with adult forestry workers as her companions, and in the final seasons Lassie lives at a ranch for troubled children.

Hopalong Cassidy with his horse Topper and his sidekick Red Connors, became a run of TV shows from the popular stories, turned films. The initial shows were edited versions of the Hopalong Cassidy movies, with narration added where needed. Hopalong, Topper, and Connors always managed to chase the bad guys in the old, wild west.

You Bet Your Life was a television quiz show that debuted in 1947. The show revolved around whether any of the contestants would say the "secret word." The contestant worked in pairs, and if any contestant said the word, a toy duck would come down from the ceiling to bring the pair \$100. The *Dinah Shore Show* was a 15-minute long television series broadcast by NBC. The fifteen minutes rounded out the time slot which featured the network's evening news. She was one of the first women to have her own TV show — a musical variety program.

The *Ed Sullivan Show* was a Sunday-night show that ran on CBS from 1948 to 1971. The variety show, with a vaudeville format, featured virtually every type of entertainment — songwriters, popular singers, opera singers, ballet dancers, dramatic actors, comedians, and even circus acts regularly appeared on his show.

Kukla, Fran and Ollie was an initially set as a children's TV show using puppets. The cast includes Kukla, the leader of the puppet troupe; Ollie (Oliver J. Dragon), a one-toothed dragon; Fletcher Rabbit, the troupe's mailman; and more. Fran, the only human to appear on screen, is the "sister" and voice of reason as the puppets engage each other concerning their weaknesses.

The *Phil Silvers Show* was a comedy series starring Phil Silvers as master sergeant Ernest G. Bilko of the U.S. Army. Bilko spent much of his time trying to wheedle money through his get-rich-quick scams, often aimed at his fellow soldiers. In return he would shield his men stating "They were his men and if anyone was going to take them, it was going to be him and only him."

The *Lone Ranger* (the name of the title character) is a masked individual who travels on his horse, Silver, with his Indian sidekick, Tonto. The three right the injustices of the American old west. The Lone Ranger's signature line was "Hi-yo, Silver, away!" as the horse galloped toward the setting sun.

The *Perry Mason* show was based on the Erle Stanley Gardner books by the same title. Mason is an attorney who defends the most indefensible cases. He finds that amazing facts can be revealed if he looks long enough at the case. Through his outstanding courtroom skills, people are often tricked or trapped into admitting their guilt.

Alfred Hitchcock Presents was a television series hosted by Hitchcock, featuring stories of terror, horror, and suspense. The stories would always end — after the last commercial — when Hitchcock would explain what mistake had finally done the villain in.

The *George Burns and Gracie Allen Show* was one of the first comedy series to make a successful transition from radio to television. Each episode of the comedy show began with Burns standing, trademark cigar in hand, offering the audience a few comments about what they were about to see. Each episode ended when Burns would turn to Allen and close with "Say goodnight, Gracie" followed by Allen turning to the audience and bidding them "goodnight."

The *Adventures of Ozzie and Harriet* premiered on ABC in 1952, running until 1966. The show strove for realism, focusing on the real-life Ozzie and Harriet Nelson and their sons. It was the longest running live-action, non-animated sitcom in U.S. TV history.

The *Tonight Show* is a late-night talk and variety show. First started in 1954 when it was hosted by Steve Allen, the *Tonight Show* is the third longest running entertainment program in US television history. The longest serving host was Johnny Carson from 1962–1992, when the program was dubbed the *Tonight Show With Johnny Carson*.

The *Twilight Zone* was one of television's first anthology series. Each episode included suspense, horror, and of course science fiction as the viewer was told "You've just crossed over into the *Twilight Zone*..." as you traveled in time to a different dimension.

The *Honeymooners* was a situation comedy, featuring Ralph and Alice Kramden in their Brooklyn, NY, apartment building. Ralph is a short-tempered, bus driver who develops many get-rich-quick schemes. (Underneath he is a soft-hearted man who is devoted to, and loving to his wife.) Alice, his level-headed wife, tolerates his schemes offering much needed, but ignored, advice. Ralph is remembered for his threat "... one of these days ... Pow! Right in the kisser! One of these days Alice, straight to the Moon!"



2009 United States Postal Service Issues



© 2008
USPS

.44
x 20
\$8.80

X1111

PLATE
POSITION

X1111

Early TV Memories
August 11



2009 United States Postal Service Issues

Thanksgiving Day Parade

September 9

Observed every year on the fourth Thursday of November, Thanksgiving is a traditional day of togetherness for families and friends. The USPS issued this commemorative stamp in four designs featuring an important part of this holiday — the Thanksgiving Day Parade. Shown are the marching bands, the large balloons of favorite animals and popular characters, the colorful floats, and the crowds of delighted onlookers.

U.S. Supreme Court Justices

September 22

The U.S. Supreme Court Justices are honored by the issuance of four stamps.

Joseph Story (1779–1845) served on the U.S. Supreme Court from 1811 to 1845. Story's attitudes and goals, legal reasonings, and knowledge were based on the republican values developed by the American Revolution.

Louis Brandeis (1856–1941) was a Justice from 1916 to 1939. A graduate of Harvard Law School (graduating at age twenty with the highest grade average in the college's history) his nomination was contested because of "his brilliance, his arithmetic, his courage, ... and...because Brandeis was the first Jew to named to the Court." However, he became one of the most famous figures to ever serve on the Court, partly because of his defense of freedom of speech and the right to privacy.

Felix Frankfurter (1882–1965) was an Associate Justice of the U.S. Supreme Court from 1939 to 1962. He became the one of the court's most outspoken advocate of judicial restraint, stating that courts should not impose sharp limits on the legislative and executive branches. He also stated that "the federal judiciary has no power to sit in judgment upon a determination of a state court..."

William Brennan (1906–1997) was known for being a leader of the judicially liberal wing as a Supreme Court Associate Justice from 1956 to 1990. He wrote a number of opinions including the establishment of the "one person, one vote" principle. He is still considered to have been among the Court's most influential members.



2009 United States Postal Service Issues



Thanksgiving Day Parade
September 9



U.S. Supreme Court Justices
September 22



2009 United States Postal Service Issues

Nature of America Series

Kelp Forest

October 1

Creatures of the deep are shown on the *Nature of America: Kelp Forest* stamps issued this year. The kelp forest is a lush undersea ecosystem in which the largest seaweeds, known as kelp, grow as tall as trees. This sheet of ten stamps highlights 27 fish, plants, and animals.



KELP FOREST

11TH IN A SERIES



N A T U R E O F A M E R I C A



2009 United States Postal Service Issues

Eid September 3

A 44-cent version of the Eid stamp was released in 2009. Eid-al-Fitr (often called Eid) is the Muslim holiday that marks the end of Ramadan, the Islamic holy month of fasting, charitable giving, and peace-making. Eid falls on the first day of Shawwal, the month that follows Ramadan in the Islamic calendar. Eid began at sunset on September 19, 2009.

Hanukkah October 8

A Menorah with nine lit candles is the design on this year's Hanukkah stamp. The nine-branched candelabrum is lit during the eight-day holiday of Hanukkah. One candle is lit each day of the holiday, with the ninth holder being for a candle that is used to light all the other candles. The menorah is one of the oldest symbols of the Jewish faith. It represents the nation of Israel and the Jewish mission to be "a light unto the nations."

Kwanzaa October 9

Kwanzaa, a nonreligious holiday that takes place over seven days from December 26 to January 1, is celebrated on this USPS issue. This modern African-American holiday celebrates the seven principles of unity, self-determination, collective work and responsibility, cooperative economics, purpose, creativity, and faith. Kwanzaa draws on African traditions and takes its name from the phrase for "first fruits" in Swahili, a widely spoken African language.

Sassoferrato Madonna October 20

Since 1978, the theme of each "traditional" Christmas stamp has been the Madonna and Child. The 2009 stamp features a painting by Italian artist Giovanni Battista Salvi (1609-1685), more commonly known as *Sassoferrato*. The painting depicts a blonde Madonna clothed in red and cradling the sleeping Christ Child in purple cloth. From each of the two top corners, the childlike face of a cherub looks down from the clouds. The painting is currently in the collection of Hearst Castle in California.

Winter Holidays October 8

This year's Winter Holidays stamps feature a reindeer, snowman, gingerbread man, and toy soldier. A merry reindeer dangles a red bulb ornament from his antler. Flurries of large flakes dust a snowman sporting a top hat, coal buttons and a carrot nose. The gingerbread man is decorated for the season with green, red, and white icing. The toy soldier smiles while standing at attention. Borders of evergreens, stars, wreaths, and holly add another holiday touch to the stamps.



2009 United States Postal Service Issues



Eid
September 3



Hanukkah
October 8



Kwanzaa
October 9



Sassoferrato Madonna
October 20



Winter Holidays
October 8









THE AMERICAN PHILATELIC SOCIETY

Stamps in this album are shown courtesy the American Philatelic Society Reference Collection, created and sustained through the generosity of APS members. With 38,000 members in 100 countries, the 123-year-old Society is the largest, nonprofit society for stamp collectors in the free world. APS offers services and educational opportunities to broaden your enjoyment of the hobby and enhance your special collecting interests, whatever they may be. The APS is supported entirely by membership dues, gifts, and the sale of its publications and services.

Visit the American Philatelic Society online at www.stamps.org

AMERISTAMP EXPO 2010 February 19–21, 2010

Admission is free to AMERISTAMP EXPO 2010, the winter show of the American Philatelic Society, coming to the Riverside Convention Center February 19–21, 2010. Whether you are eight or 80, learn the ins and outs of one of the world's greatest hobbies. Stamp exhibits, world-class rarities, and priceless historical mail will be shown. Dealers from the U.S. and abroad will have everything you need to pursue the stamp hobby, with helpful seminars and how-to sessions, catering to interest of every kind. If you have an old collection, "Stamps in Your Attic" will give free thumbnail evaluations of what you have throughout the show, sponsored by the National Stamp Dealers Association. AMERISTAMP EXPO is open Friday and Saturday 10 a.m. to 6 p.m., and Sunday from 10 a.m. to 4 p.m.
To learn more, visit <http://www.stamps.org/Ameristamp/index.htm>.



Yours Free — Mystic's U.S. Stamp Catalog

A must for every stamp collector. Enjoy 132 pages of color stamp photographs, valuable collecting tips, fascinating history, plus much more. Complete listing of U.S. postage stamps including Commemoratives, Air Mails, and Duck Stamps. Also albums and collecting supplies.

Request at www.MysticStamp.com, 800-433-7811 or write to Mystic at 9700 Mill Street, Camden, NY 13316

